

Purchase Area Development District (PADD) / Child Care Resource & Referral (CCR&R)

There is a great deal of research which proves that the early years of a child's life are extremely important. For their entire lives, children will draw upon the connections that they make during their first 5 years. The services provided by the PADD / CCR&R are focused on providing parents, child care providers, community partners, and employers with as much support as possible to make families successful.

Parents

Parents can request child care referrals to state-approved child care providers. PADD / CCR&R staff talk with parents to determine their child care needs. Basic information needed from parents includes:

- age of the child(ren) needing care;
- location (city and/or county); and
- hours that care is needed.

Parents receive consumer education materials containing information on what questions to ask and what things to look for when searching for a child care provider.

Additional resources are provided on available subsidy programs and age-appropriate information.

All referrals include information about whether or not the child care provider is participating in the *STARS for KIDS NOW* program or is nationally accredited.

Referrals can be provided in person, by phone, e-mail, or fax. Parents can also do their own search for child care by going to www.purchaseadd.org.

(The PADD / CCR&R provides referrals only and does not make recommendations. The PADD / CCR&R does not provide child care for children.)



Child Care Providers

Free on-site, one-on-one technical assistance based on state regulations and best practice is available to all state-approved child care providers.

Child care providers can access child development training that meets the licensing and certification regulatory requirements of the state, STARS training requirements, and CDA training requirements.

Resources to be used in the child care environment are available in the lending library. Child care providers may access materials such as curriculum guides, children's books, theme kits, and puppets.

Quarterly newsletter is published and includes training information, articles, and upcoming events.

Technical assistance is available to anyone interested in opening a licensed child care center or certified family day care home. Resources are available at the PADD / CCR&R office to assist potential providers through the start-up process.

The PADD / CCR&R can provide links to community and child care resources such as the Child & Adult Care Food Program and *KIDS NOW* initiatives.

Community & Employers

The PADD / CCR&R strives to partner with community organizations and employers to promote quality child care, learn about local needs, and provide assistance and links to other resources.

The PADD / CCR&R participates in community events such as Back to School events and Community Baby Fairs to share information with parents and community citizens.

Child care data is shared with community partners to help them determine the needs of the community and the status of child care in their community.

Consumer Education sessions and resources are available for parent groups, including tips for choosing quality child care, school-readiness, and learning through play.

"*Brown Bag and Gab*" sessions are also available to employers who are interested in sessions presented to employees on-site during lunch. Examples of "*Brown Bag and Gab*" sessions include:

- Tips for Choosing Quality Child Care;
- Child Care for Your Infant, Toddler, or Preschooler;
- A Child's Development; and
- Play Is FUNdamental.



270-247-7171 and 1-877-352-5183

www.purchaseadd.org and www.kentuckypartnership.org

The Child Care Advisory Board is a committee of the PADD Board of Directors and meets quarterly to discuss child care issues facing parents, providers, and the community.

The Child Care Advisory Board
Frances Hamilton, Chair

Ballard County
Tina Jones

Carlisle County
Julie Hook
Angelia Lee

Graves County
Christy Irvan
Tana Jones
Lisa Marshall

Marshall County
Cathy Locke
Melanie Thompson
Jennifer Washburn

Calloway County
Cindy Graves
Michelle Hansen
Sue Smith

Fulton County
Rick Garland

Hickman County
Vickie Batts

McCracken County
Cindy Barletto
Stephen Bradley
Cindy Rodgers
Marianna Romero

Regional
Kathy Harcourt
Mitzi Lisanby
Charlie Ross

Please contact the PADD / CCR&R office for upcoming meeting dates.



Purchase Area Development District
Child Care Resource & Referral
1002 Medical Drive - P O Box 588
Mayfield KY 42066
270-247-7171 and 1-877-352-5183
Statewide number: 1-877-316-3552
www.purchaseadd.org
www.kentuckypartnership.org

Office hours: Monday - Friday
8 a.m. to 4:30 p.m. & by appointment.

Henry Hodges, Executive Director
Jennifer Beck-Walker, Human Services

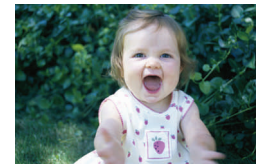
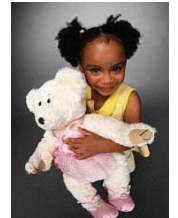
Beth Carrico, CCR&R Coordinator
Will Dee Stahr, CCR&R Specialist
Cathy Holshouser, Administrative Asst.



The Child Care Resource & Referral program is funded with federal Child Care Development Block Grant dollars through a contract between the Cabinet for Health and Family Services and the University of Kentucky and a subcontract to the Purchase Area Development District.

Purchase Area
Development District

Child Care Resource & Referral



Purchase Area Development District
Child Care Resource & Referral
1002 Medical Drive - P O Box 588
Mayfield KY 42066
270-247-7171 and 1-877-352-5183
Statewide number: 1-877-316-3552
www.purchaseadd.org
www.kentuckypartnership.org